

Nutrition

	per 100g
Energy	1226kJ/391kcal
Fat	19g
of which Saturates	12g
Carbohydrate	27g
of which Sugars	20g
Fibre	2.9g
Protein	7.1g
Salt	0.19g

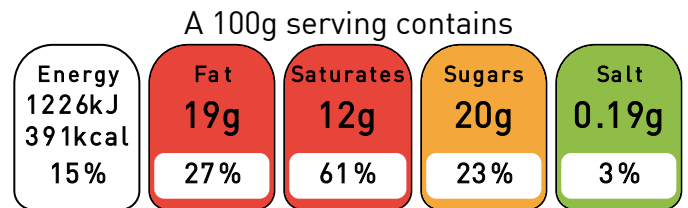
Ingredient Declaration

Mascarpone Cheese [MILK], Cream [ButterMILK, Partly Hydrogenated Vegetable Oil (Palm), Cream [MILK], Vegetable Oil (Palm), ButterMILK Powder, Emulsifiers [E472b, E475, E435, E471, E433], Stabilizers [E410, E407], Salt Color [E160a]], Water, EGG Yolk [Potassium Sorbate E202, Citric Acid E330, Emulsifying Agent E471], Cocoa Powder, Sugar, EGG Whole [Potassium Sorbate E202, Citric Acid E330, Emulsifying Agent E471], Finger Biscuits [WHEAT Flour, Sugar, Free-Range EGGS, Glucose Syrup, Raising Agents, Diphosphates], Additive [Sugar, Dextrose, Bovine Gelatin, Skimmed Milk Powder, Modified Starch], WHEAT Flour, Icing Sugar [Dextrose, Wheat Starch, Vegetables Oils And Fats (Palm Not Hydrogenated), Vanilla Natural Flavor], Coffee, Additive [Water, Emulsifier E471 & E477, Stabilizer E450, Flavoring, Propylene Glycol E1520, Sodium Stearate E470a], Baking Powder [Corn Starch, Sodium Bicarbonate [E500ii], Sodium Acid Pyrophosphate [E450a]] [WHEAT]

Allergens

- Contains Gluten
- Contains Wheat
- Contains Eggs
- Contains Milk

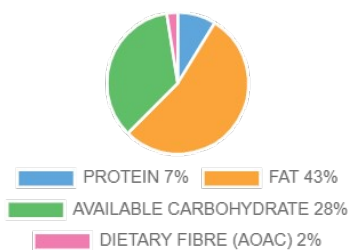
Front of Pack



of an adult's reference intake

Typical values per 100g: 1226kJ/391kcal

Energy Contributions



EU Reference Intakes

Per 100g		RI Quantity	% RI	
Energy	kJ	8400	1226	15%
Total Fat	g	70.0	18.9	27%
Saturates	g	20.0	12.2	61%
Carbohydrate	g	260.0	27.1	10%
Sugars	g	90.0	20.4	23%
Protein	g	50.0	7.1	14%
Salt	g	6.0	0.19	3%