

Nutrition

	per 100g
Energy	1271kJ/304kcal
Fat	16g
of which Saturates	2.7g
Carbohydrate	36g
of which Sugars	28g
Fibre	1.6g
Protein	3.6g
Salt	0.07g

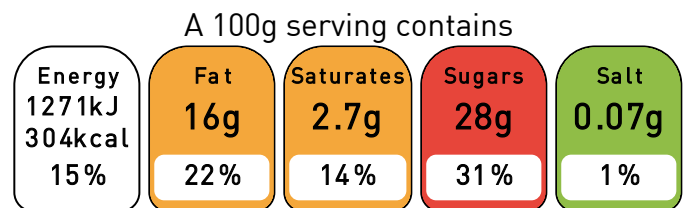
Ingredient Declaration

Cake Mix Chocolate [Sugar, WHEAT Flour, Fat Reduced Cocoa Powder, Vegetable Oils (Rapeseed), Modified Starch, Whey Powder (MILK), Raising Agent (Sodium Bicarbonate E500ii, Sodium Acid Pyrophosphate E4050i), WHEAT Gluten, Salt, Emulsifier (Lactic Acid Esters Of Mono- And Diglycerides Of Fatty Acids E472b, Mono- And Diglycerides Of Fatty Acids E471, Sodium Stearoyl-2-Lactylate E481), Thickener (Sodium Carboxy Methyl Cellulose E466, Xanthan Gum E415, Guar Gum E412), Flavoring], Cream [Water, Fully Hydrogenated Vegetable Oils And Fats [26.5%] (Fats [Palm Kernel]), Oils [Rapeseed And Sunflower And Maize And Soybean In Varying Proportions], Sugar, Stabilizers [E420ii, E463], MILK Proteins, Emulsifiers [E472e, E322 Soy Lecithin], Salt, Flavorings, Color [Beta-Carotene]], Water, Red Cherries Fruit Filling [Glucose Syrup, Sugar, Water, Acidity Regulator [E330], Antioxidant [E300], Gelling Agent [E1442], Preservative [E202], Food Flavoring [E120]], Dark Chocolate [Cocoa Mass, Sugar, Cocoa Butter, Emulsifier (Soy Lecithin E322), Natural Vanilla Flavoring] [SOYBEANS, MILK], EGG Whole [Potassium Sorbate E202, Citric Acid E330, Emulsifying Agent E471], Rapeseed Oil, Golden Syrup (Cane Sugar), Cherries, Canned In Syrup, Additive [Sugar, Dextrose, Bovine Gelatin, Skimmed Milk Powder, Modified Starch], Sugar, Brown Sugar, Liqueur Flavour

Allergens

- Contains Gluten !
- Contains Wheat !
- Contains Eggs !
- Contains Soybeans !
- Contains Milk !
- Suitable for Vegetarians

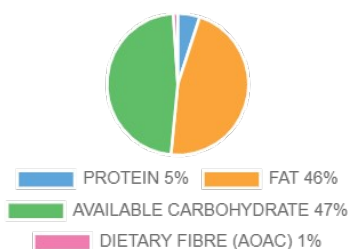
Front of Pack



of an adult's reference intake

Typical values per 100g: 1271kJ/304kcal

Energy Contributions



EU Reference Intakes

Per 100g		RI Quantity	% RI
Energy	kJ	8400	1271 15%
Total Fat	g	70.0	15.7 22%
Saturates	g	20.0	2.7 14%
Carbohydrate	g	260.0	36.0 14%
Sugars	g	90.0	28.1 31%
Protein	g	50.0	3.6 7%
Salt	g	6.0	0 1%

