

## Nutrition

	per 100g
Energy	1230kJ/293kcal
Fat	12g
of which Saturates	6.4g
Carbohydrate	41g
of which Sugars	26g
Fibre	1.4g
Protein	3.9g
Salt	0.12g

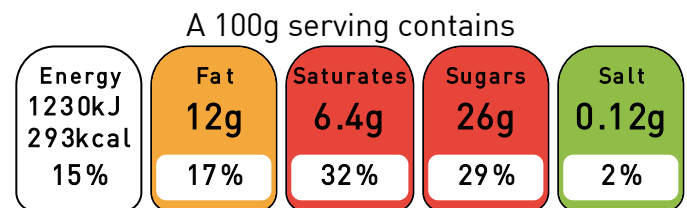
## Ingredient Declaration

Coffee Biscuits (WHEAT Flour, Sugar, Vegetable Fat [E320, E321], Invert Syrup, Barley Malt Extract, Salt, Raising Agents [Ammonium Bicarbonate, Sodium Bicarbonate], Butter Flavor, Caramel Toffee Flavor), Sugar, Cream (ButterMILK, Partly Hydrogenated Vegetable Oil [Palm], Cream [MILK], Vegetable Oil [Palm], ButterMILK Powder, Emulsifiers [E472b, E475, E435, E471, E433], Stabilizers [E410, E407], Salt Color [E160a]), Water, Cold (Glucose Syrup, Water, Gelling Agents [E440, E401, E407, E415], Citric Acid [E330], Titanium Dioxide [E171], Trisodium Citrate [E331iii], Tricalcium Phosphate [E341iii], Potassium Sorbate [E202], Flavoring) [WHEAT, EGGS, SOYBEANS, MILK], Cream [Water, Fully Hydrogenated Vegetable Oils And Fats [26.5%] [Fats [Palm Kernel]], Oils [Rapeseed And Sunflower And Maize And Soybean In Varying Proportions], Sugar, Stabilizers [E420ii, E463], MILK Proteins, Emulsifiers [E472e, E322 Soy Lecithin], Salt, Flavorings, Color [Beta-Carotene]), Dark Chocolate (Cocoa Mass, Sugar, Cocoa Butter, Emulsifier [Soy Lecithin E322], Natural Vanilla Flavoring) [SOYBEANS, MILK], EGG Whole [Potassium Sorbate E202, Citric Acid E330, Emulsifying Agent E471], Coffee, WHEAT Flour, Additive (Water, Emulsifier E471 & E477, Stabilizer E450, Flavoring, Propylene Glycol E1520, Sodium Stearate E470a), Baking Powder [Corn Starch, Sodium Bicarbonate [E500ii], Sodium Acid Pyrophosphate [E450a]] [WHEAT]

## Allergens

- Contains Gluten !
- Contains Wheat !
- Contains Eggs !
- Contains Soybeans !
- Contains Milk !
- Suitable for Vegetarians

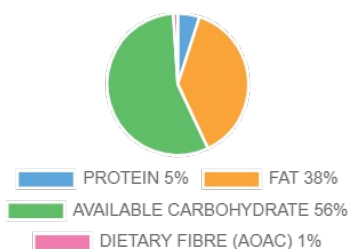
## Front of Pack



of an adult's reference intake

Typical values per 100g: 1230kJ/293kcal

## Energy Contributions



## EU Reference Intakes

Per 100g		RI Quantity	% RI
Energy	kJ	8400	15%
Total Fat	g	70.0	17%
Saturates	g	20.0	32%
Carbohydrate	g	260.0	16%
Sugars	g	90.0	29%
Protein	g	50.0	8%
Salt	g	6.0	2%

